

GEOSPATIAL New Mexico

Overview of Activities

*New Mexico Counties Conference, Clovis New Mexico
June 2019*



Office of Broadband and Geospatial Initiatives

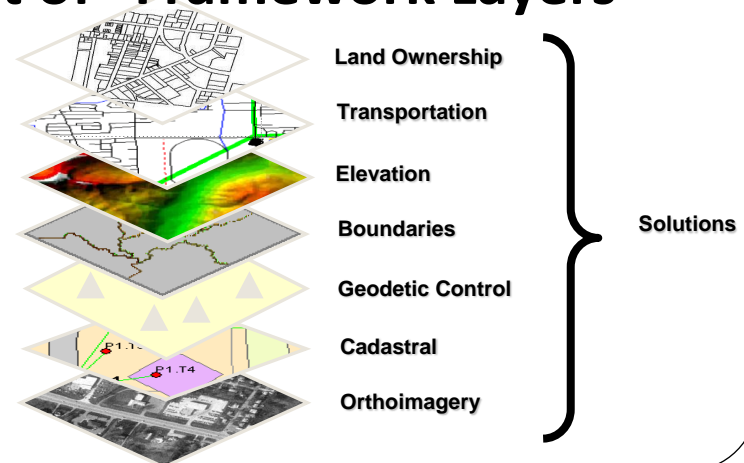


New Mexico Geospatial Advisory Committee

GeoPLAN: NM Strategic Plan

RECOMMENDATIONS:

- **GIO: Establish a Geographic Information Officer position**
- **Services: Designate** and fund NM GeoData Clearinghouse (EDAC)
- **Budget:** Provide an annual budget of \$850K
- **Re-Engage: Involve highest levels of management.**
- ~~SDI: Create a Spatial Data Infrastructure Committee~~
- **Update Business Plans: Development of “Framework Layers”**
- **Funding:** Recurring support funding

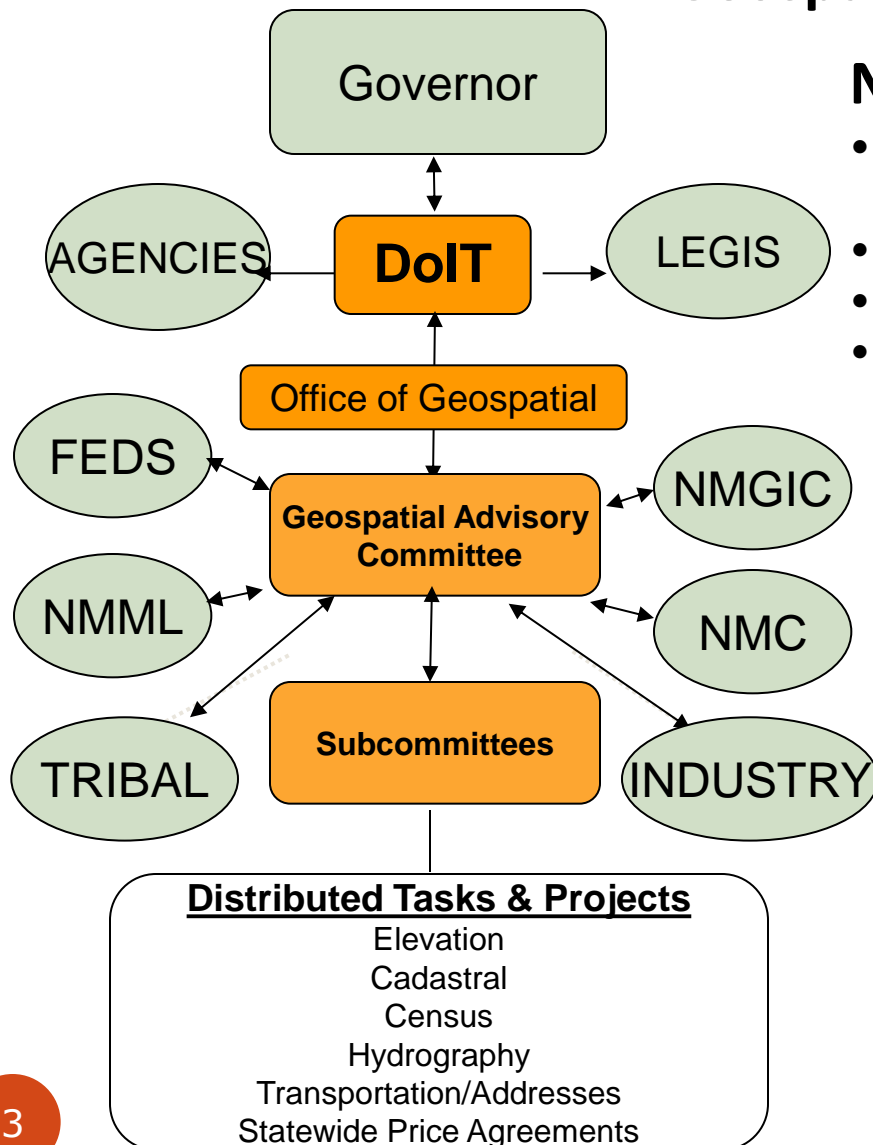


PLAN: <http://www.gac.state.nm.us/docs/NMGeospatialStrategicPlan.pdf>

MEMORIAL: <http://www.gac.state.nm.us/docs/HJM81-TaskForce-FindingsAndRecs.pdf>

GeoADMIN: Communication

Geospatial Information Technology (GIT)



New Mexico Leaders:

- DoIT: Dept of Information Technology
 - Office of Broadband and Geospatial Initiatives
- NMGIC: NM Geographic Information Council
- NMC: NM Counties
- NMML: NM Municipal League

Participants:

- Local Governances
- State Governances
- Federal Governances
- Tribal Nations
- Industry/Professional

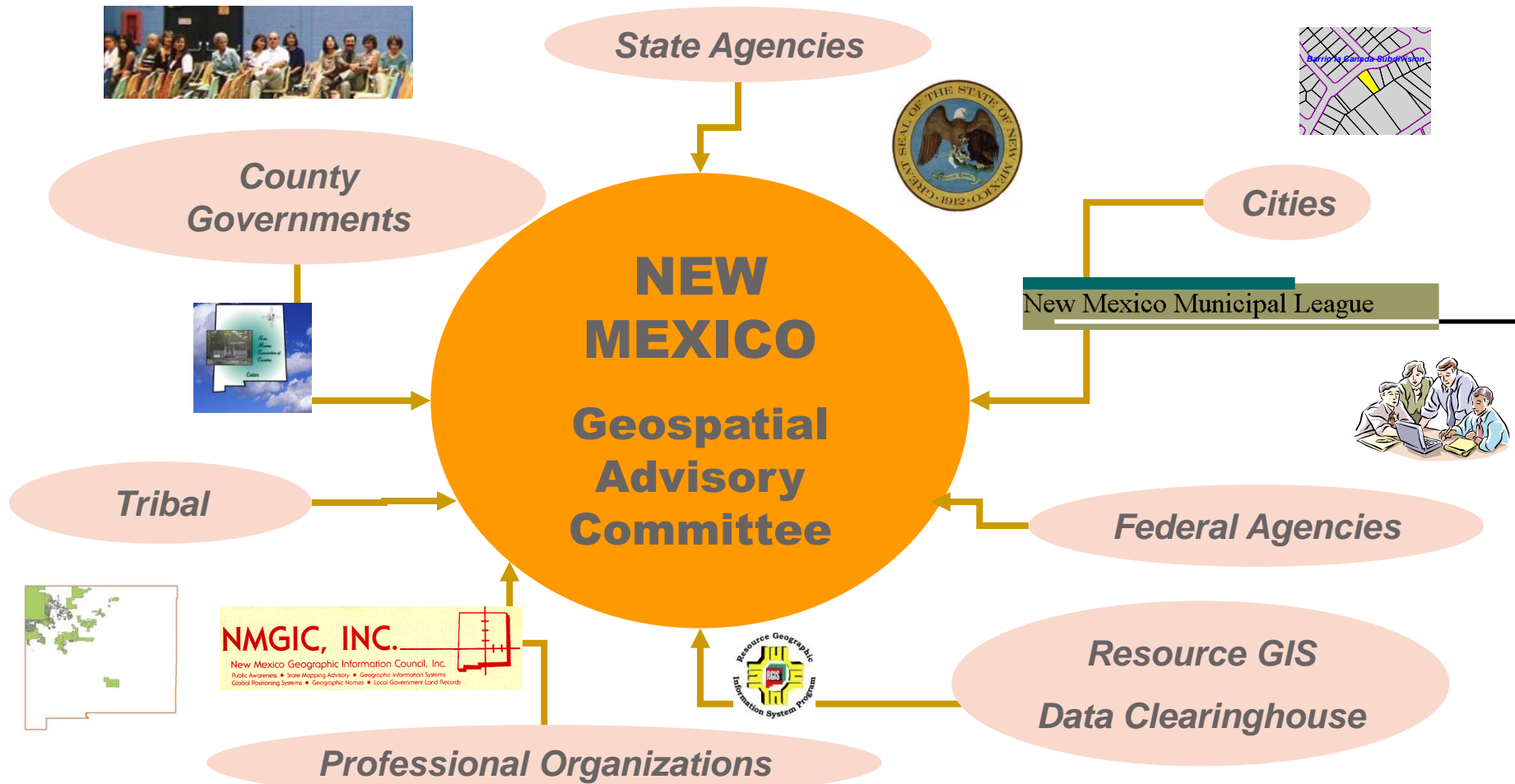
The New Mexico Geospatial Advisory Committee (GAC) guides the use and development of Geospatial Technologies within New Mexico by advising the State Department of Information Technology (DoIT) Cabinet Secretary and CIO. The committee meets monthly and includes representatives from state, federal, local, tribal, and professional interests.

GAC: <http://www.gac.state.nm.us/index.html>

GeoADMIN: Advisory Committee



New Mexico Geospatial Advisory Committee



GAC MEMBERSHIP: http://www.gac.state.nm.us/docs/gac_membership.pdf

GAC Map Gallery: Services - <http://www.gac.state.nm.us/maps/mapservices.html>

GAC Map Gallery: State Maps: http://www.gac.state.nm.us/maps/nm_maps.html

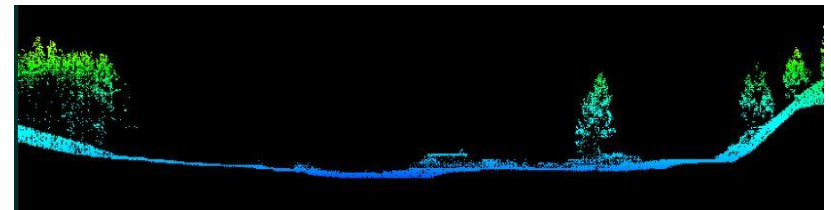
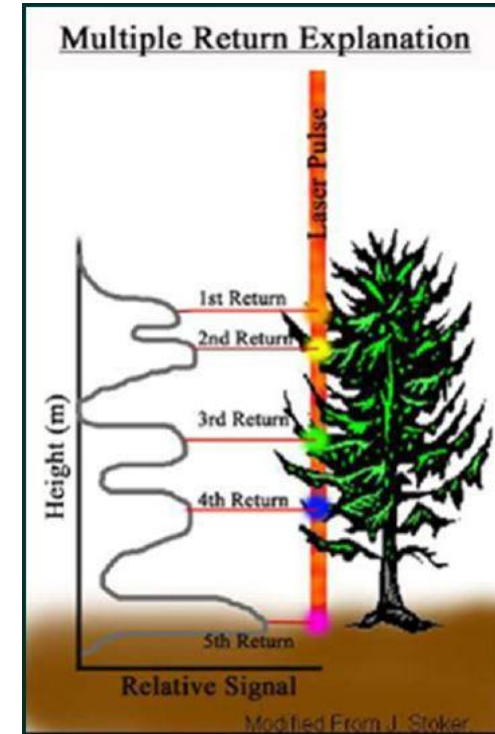
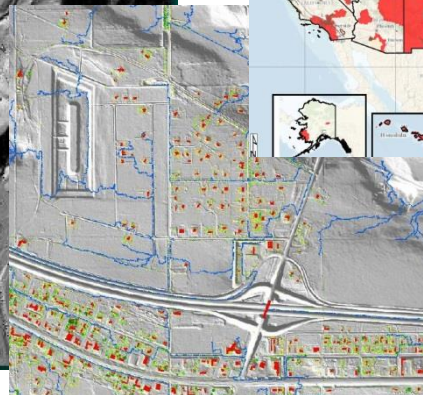
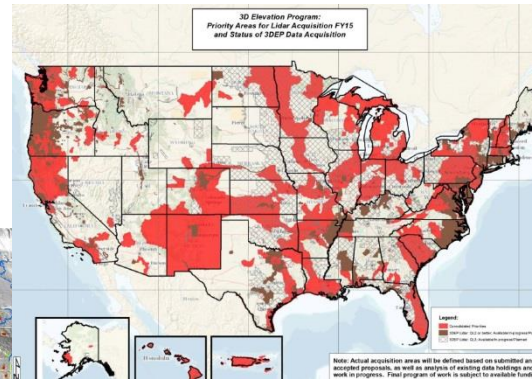
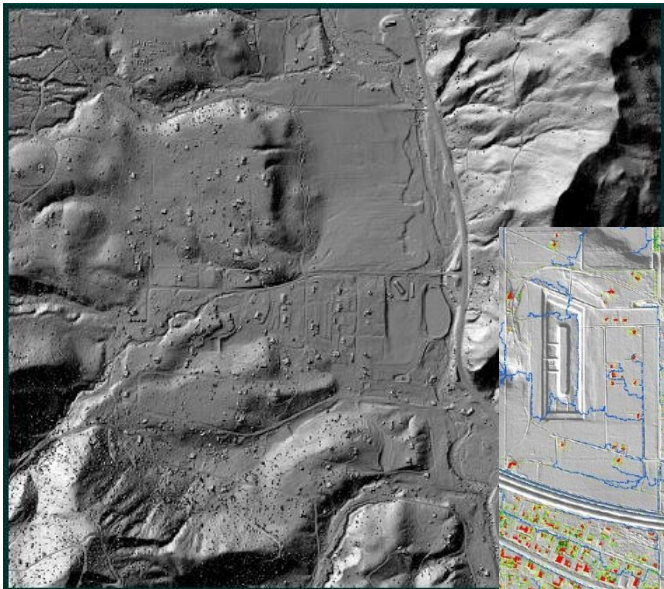
GAC Announcements: <http://www.gac.state.nm.us/Announcements.html>

GeoADMIN – Elevation



New Mexico Elevation Data Planning and Acquisition Subcommittee

- Represents the State in Elevation Data Issues.
 - NM designated Top Priority State
 - Over 50% (\$15M) of the state has been collected
 - Partners: Federal and Local Funding (No State Funds)
 - Future: Funding promises to complete state in 2020
 - NM Counties presented legislation (Map Fund)
 - Resides with the Office of the State Engineer
 - NM911 Support – Search and rescue

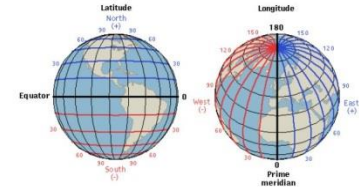


GeoADMIN – Cadastral

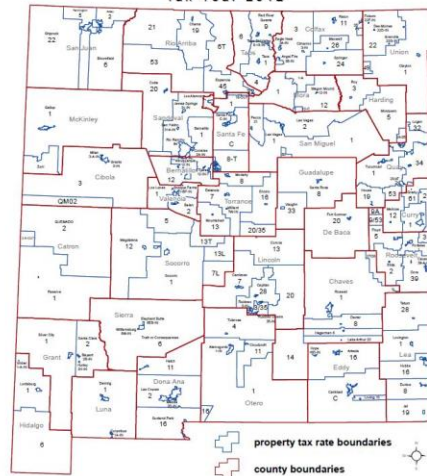


New Mexico Cadastral, Boundary, and Geodetic Control Subcommittee

- Represents the State Cadastre, Boundaries, and Geodetic Survey
 - NM Taxation and Revenue Department Steward to the U.S. Census Bureau
 - Coordinates local government boundary changes with Census
 - Assist Counties in Developing Assessment Mapping Projects
 - Provides Taxation Maps
 - NM911 Support – Annexation/municipal boundary changes

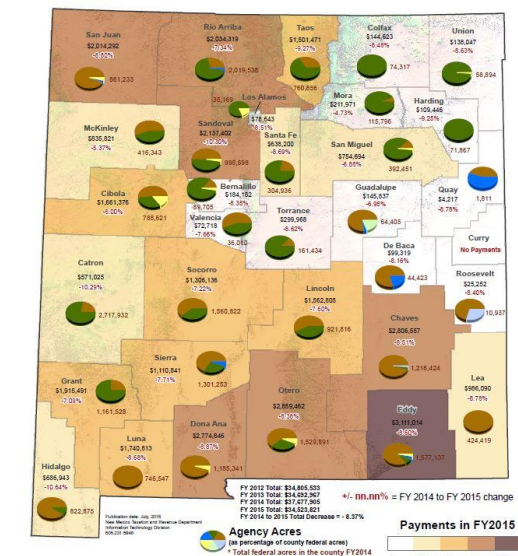


Property Tax Rate Boundaries
State of New Mexico
Tax Year 2012

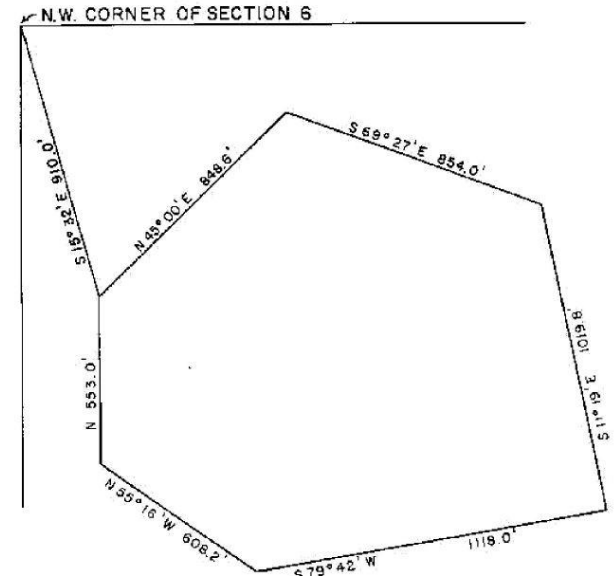


This layer represents boundaries for New Mexico property tax district categories as identified on the "Certificate of Property Tax" published for each of the State's thirty-three counties by the Department of Finance and Administration's Budget and Finance Bureau.
"Certificate of Property Tax" may be viewed at:
http://hmda.state.nm.us/Certificate_of_Property_Tax.aspx

State of New Mexico
Payments In Lieu of Taxes
Fiscal Year 2015



Payments In Lieu of Taxes
"Payments in Lieu of Taxes" (PILT) are federal payments to local governments that help offset losses in property taxes due to nontaxable federal lands within their boundaries.
To learn more, please visit:
<http://www.doi.gov/pilt/>

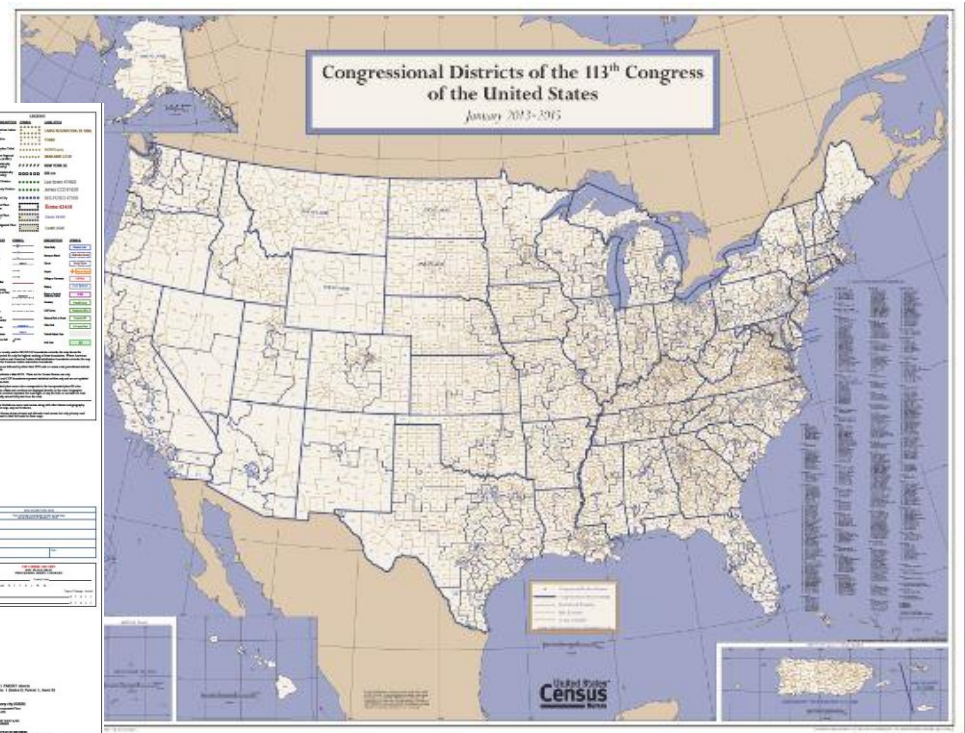
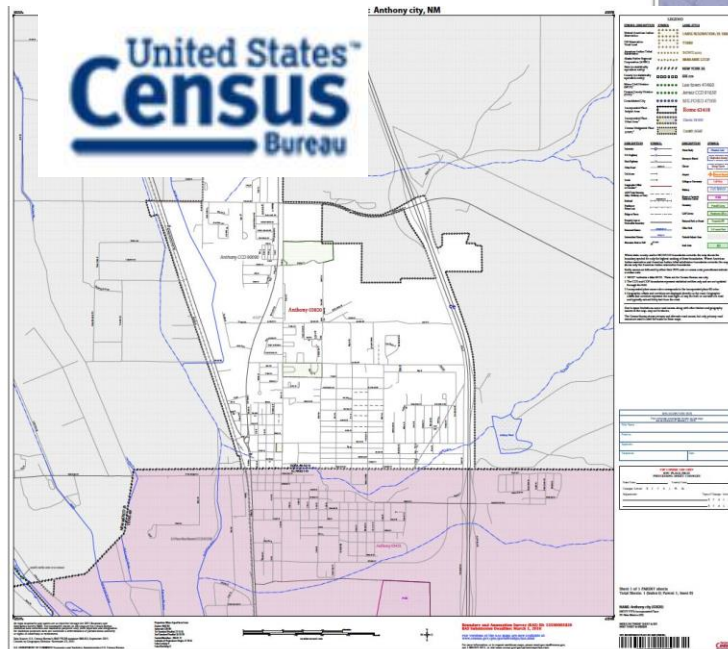


GeoADMIN – Decennial Focus



Decennial Census Focus Group Subcommittee

- Support local, state, and federal coordination and facilitation towards 2020 Census
 - Provide cohesive, unified, and focused engagement with Census Bureau
 - Educate executives and legislatures on the value of a “complete count”
 - Programs: Local Update of Census Addresses, Participant Statistical Areas Program, Complete Count Committees, Block Boundary Suggestion Program, Redistricting Data Program, etc.
- NM911 Support – Address points

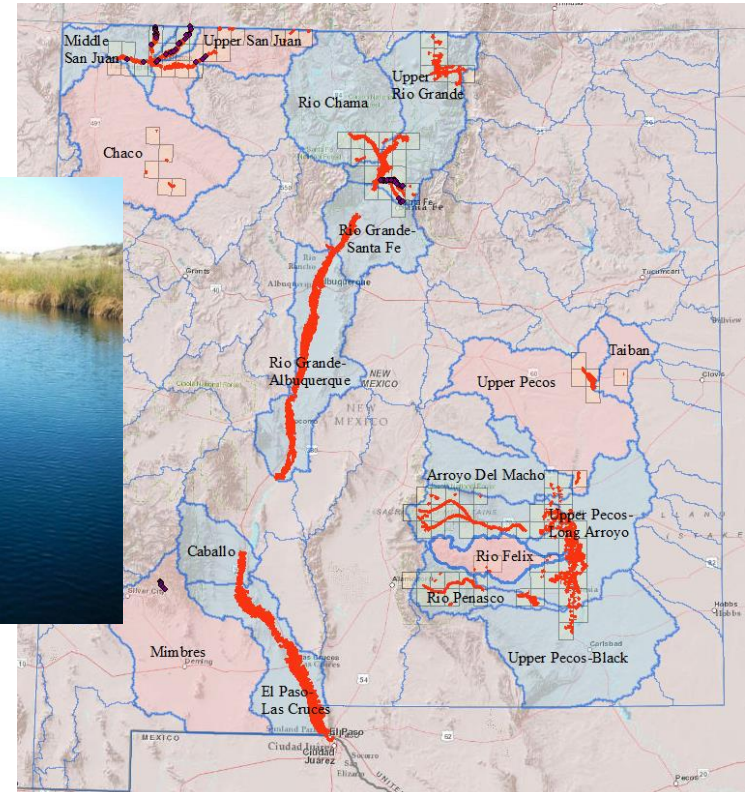
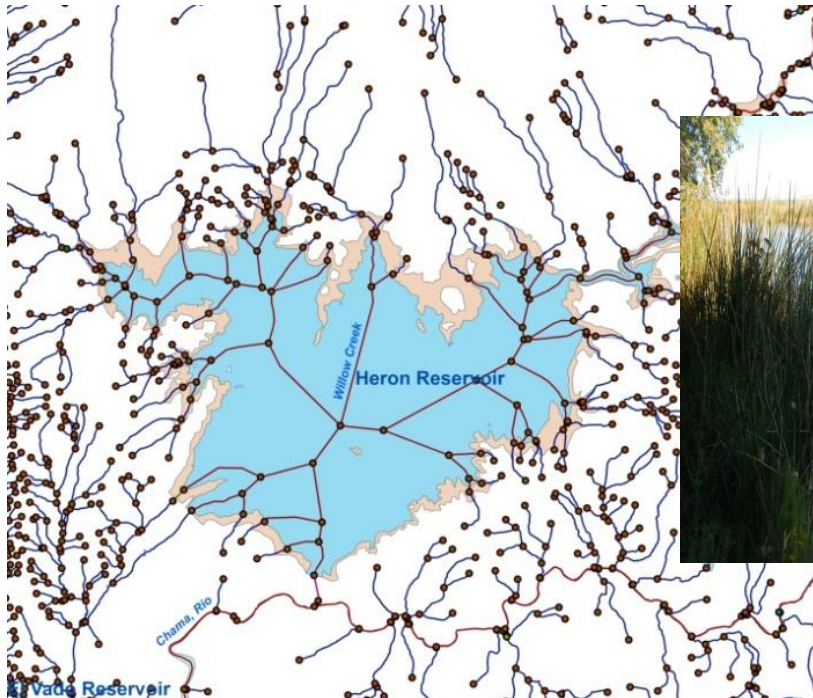


GeoADMIN – Hydrography



New Mexico National Hydrography Dataset (NHD) Subcommittee

- Represents the State in Hydrography Data Issues.
 - NM Environment Department: Data Steward for New Mexico with USGS
 - EDAC: Employs USGS Certified NHD Editors
 - Project: Conveyances/Acequia
 - NM911 Support – Water bodies, streams, gages (fire/flooding)

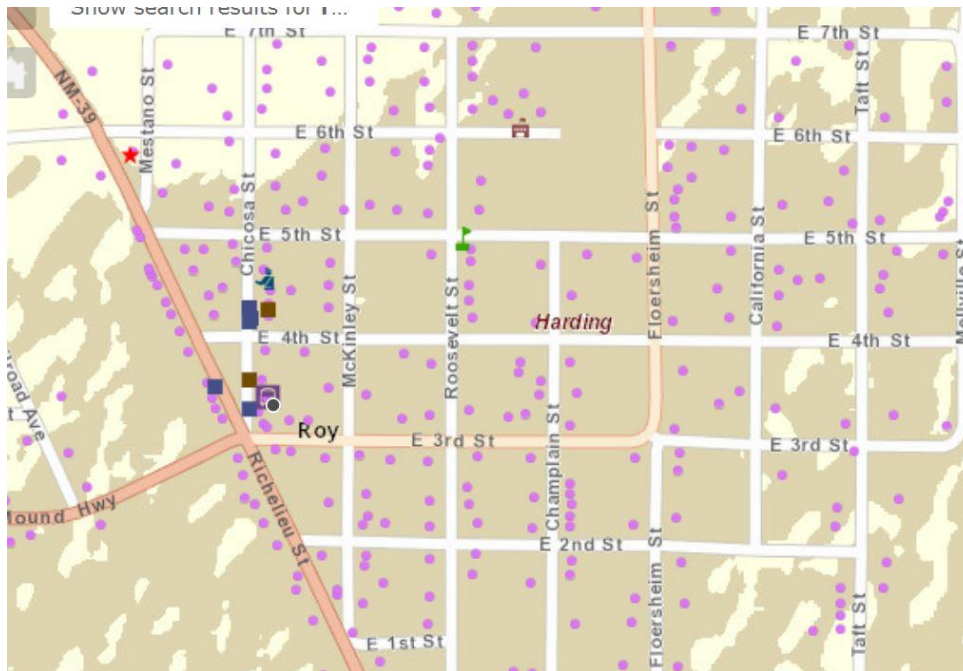


GeoADMIN – Transportation/Addresses

New Mexico Transportation/Address Subcommittee



- Represents the State in transportation and address data issues
 - Single comprehensive up to date statewide datasets
 - Routable Transportation Network and Master Address Dataset (MAD)
 - Integrated network to support DoIT/NM911, DPS/CAD, DOT/ARNOLD/TDM/LWL
 - Local Government engagement an important component
 - NM911 Support: Primary data requirement (roads/addresses)



GeoADMIN – Agreements/Contracts

GeoType Service Agreements

One Stop Shop (OCR Compliant)

- <http://www.gac.state.nm.us/Resources.html#purchase>

Geospatial Technology Services

- Total Vendors: 29
- Site: <http://www.generalservices.state.nm.us/statepurchasing/40-000-14-00106.aspx#Cat4>

Geospatial Products and Support Services

- Total Vendors: 5 (Data Transfer Solutions, Esri, GeoComm, Intergraph, Trimble)
- Site: https://www.generalservices.state.nm.us/statepurchasing/Statewide_Price_Agreements.aspx
 - Scroll to IT/GIS

Geo911 Equipment and Services

- Total Vendors: 15
- Site: https://www.generalservices.state.nm.us/statepurchasing/Statewide_Price_Agreements.aspx
 - Scroll to IT/E911



GeoADMIN – NSGIC



National States Geographic Information Council

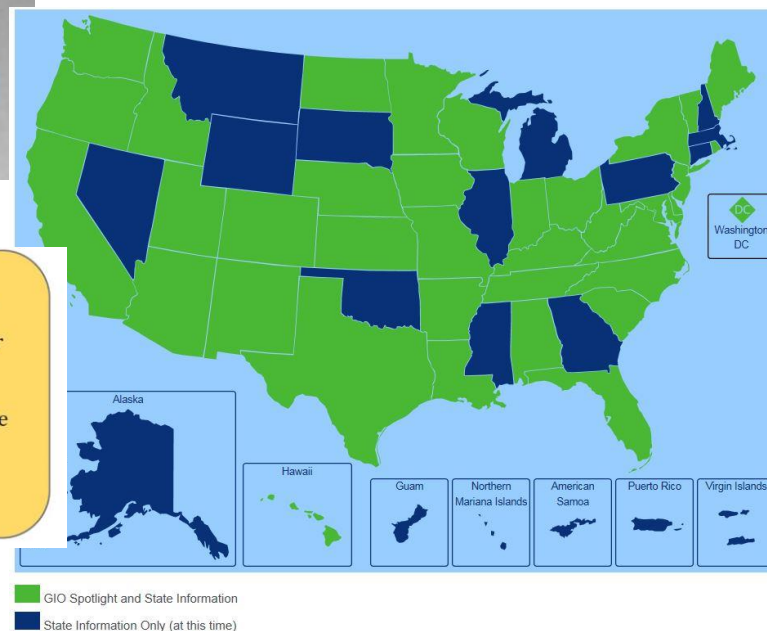
- Represents the State in National Geospatial Initiatives (Five Memberships)
 - NM Members: Transportation, GeoPreparedness, Addresses, GeoClearinghouse, GIO
 - NM Tribal: Represent NSGIC as the National Tribal Liaison
 - Advocate for National Issues: Elevation, Imagery, Legislation, NG911, Public Safety
 - Collaborate: Engage local, state, federal, and industry interests
 - Conference: Snowbird Utah (23-27 September 2019)



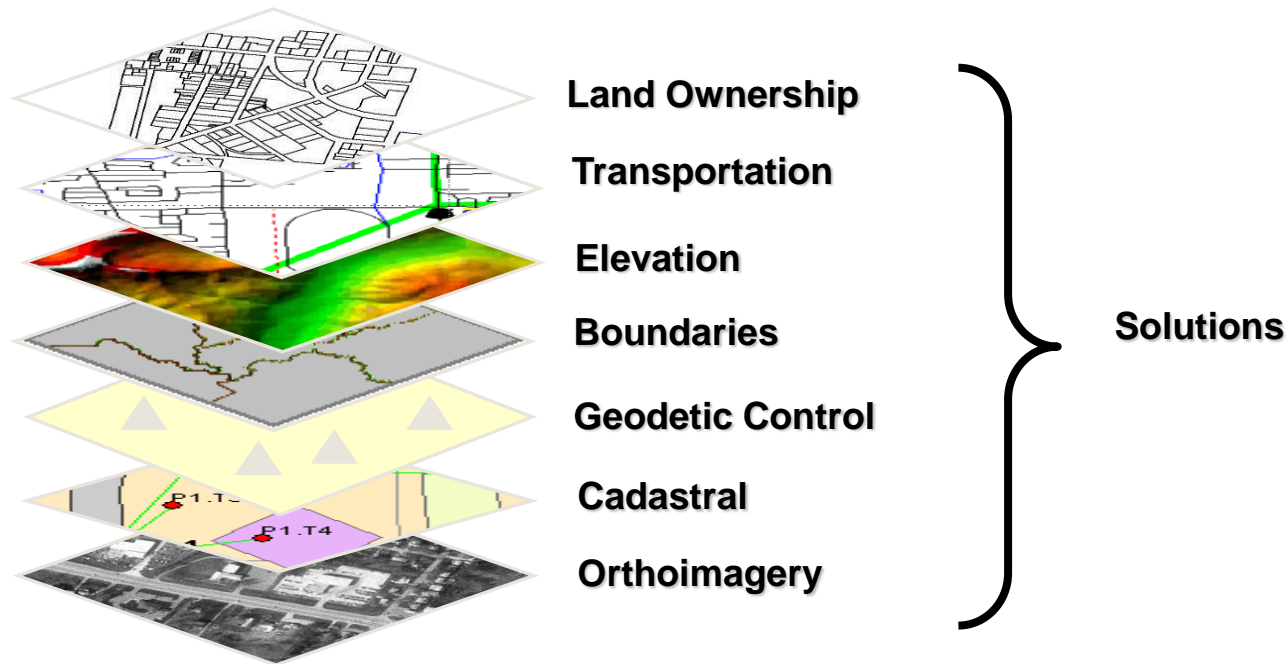
Emergency Response and Next Generation 9-1-1



- First Responders are typically sent to specific addresses by their Public Safety Answering Points (PSAPs or 9-1-1 Call Centers).
- These addresses must include X & Y coordinates that allow emergency personnel to find the location the first time, and to be dispatched by the shortest routes.
- An accurate National Address Point Database will save lives.



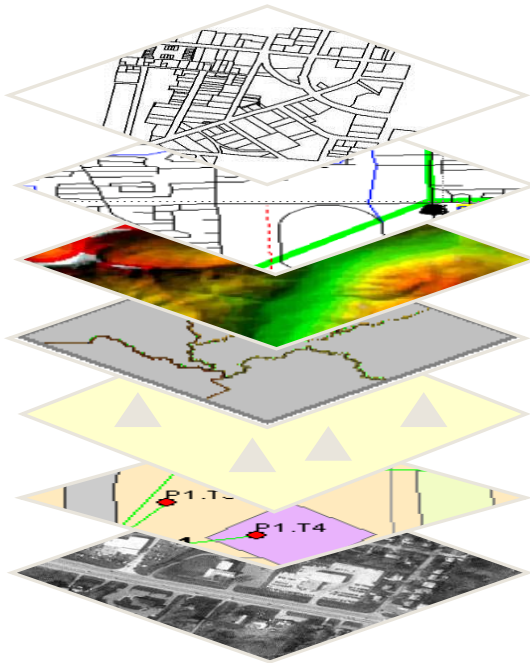
GeoDATA: Framework Layers



Base Map Data Requirements:

- Steward
- Business Plan
- Metadata
- Quality Check
- Accuracy Check

GeoDATA: Stewardship



Hydrography – **ENV/USGS**

Transportation – **DOT/USDOT**

Elevation – **EDAC/USGS**

Boundaries – **TRD/Census**

Geodetic Control – **DOT/NGS**

Cadastral – **TRD/BLM**

Orthoimagery – **EDAC/USGS**

Local
Governance

State Agreements

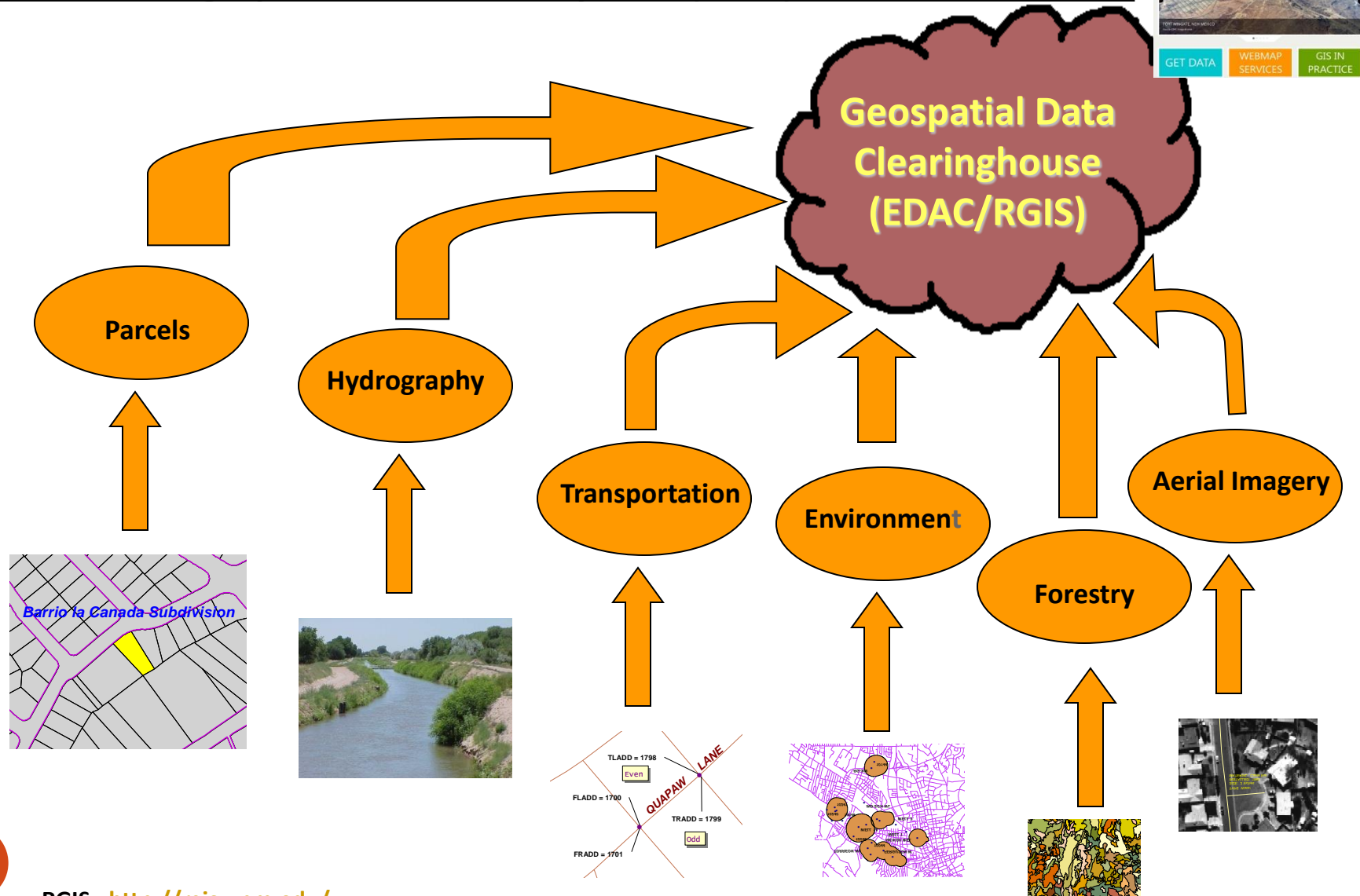
- Administration Steward: DoIT
- Technical Steward: EDAC
- Data Steward: Agency
 - Sample Agreement:
http://www.gac.state.nm.us/subcommittees/hydrography/State_moa_stewardship_signed.pdf

Base Map Data Requirements

- Steward
- Business Plan
- Metadata
- Quality Check
- Accuracy Check

GeoDATA: RGIS Data Clearinghouse

Resource Geographic Information System (RGIS) - Data and Services



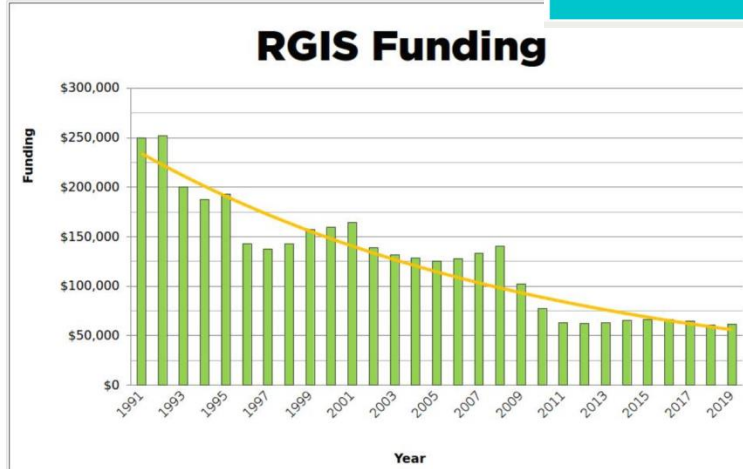
GeoDATA: RGIS Portal – Version 6.0

NEW PORTAL

- State Statute Designated
- Free Downloads
- Five Terabytes and Growing
- Over 100K Datasets as a Service
- Open Source Service

The screenshot shows the RGIS portal interface. At the top, there's a search bar with the text "Your search in: RGIS/Boundaries for any description with a format of all and at location anywhere found 67 results." Below the search bar, there's a list of datasets. The sidebar on the left contains a tree view of categories: RGIS, Agriculture, Boundaries, Cadastral and PLSS, Census and Demography, Climate, Elevation and Terrain, Environment, FEMA Risk Map Products, Geosciences, Hazards, Health, Imagery, Location, Public Safety, State Agencies, Structures, Topographic Maps, Transportation, Utilities and Communication, and Water.

The screenshot shows the RGIS portal interface with a map of New Mexico. The map is titled "NEW MEXICO TOPOGRAPHIC MAP" and "Source: USGS". Below the map, there are three large buttons: "GET DATA" (blue), "WEBMAP SERVICES" (orange), and "GIS IN PRACTICE" (green). The top navigation bar includes links: ABOUT, GET DATA, WEB SERVICES, FAQ, GIS IN PRACTICE, RESOURCES, GLOSSARY, and DONATE.



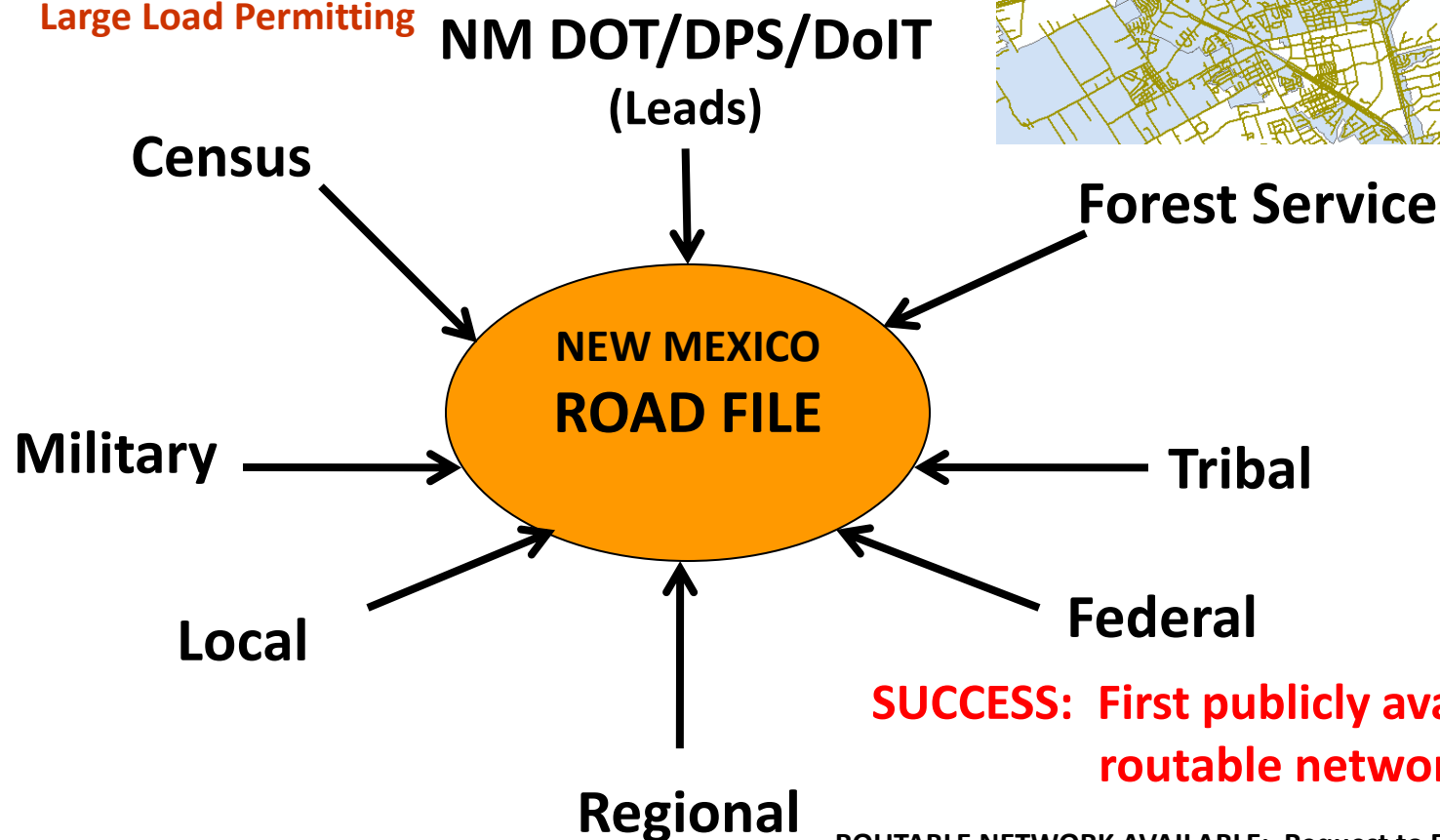
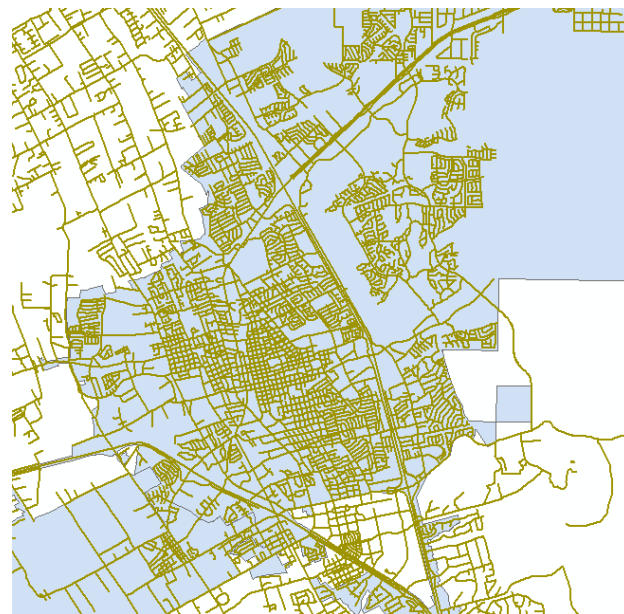
RGIS HISTORY:

- 1988 – New Mexico State agencies surveyed by four UNM units to assess the feasibility for developing a statewide computer mapping and geographic information system (RGIS)
- 1989 – House Bill 218 requested funds for establishing a GIS clearinghouse
- 1992 – RGIS clearinghouse opened and provided digital data via 4mm and 8 mm tapes
- 1996 – rgis.unm.edu established
- 2013 – Legislation: Designated State Geospatial Clearinghouse

GeoDATA: NM Roads

Collaborative:

- NM911/DoIT/DFA
 - Local Governments
- Public Safety
 - Computer Assisted Dispatch
- Transportation
 - ARNOLD
 - Large Load Permitting

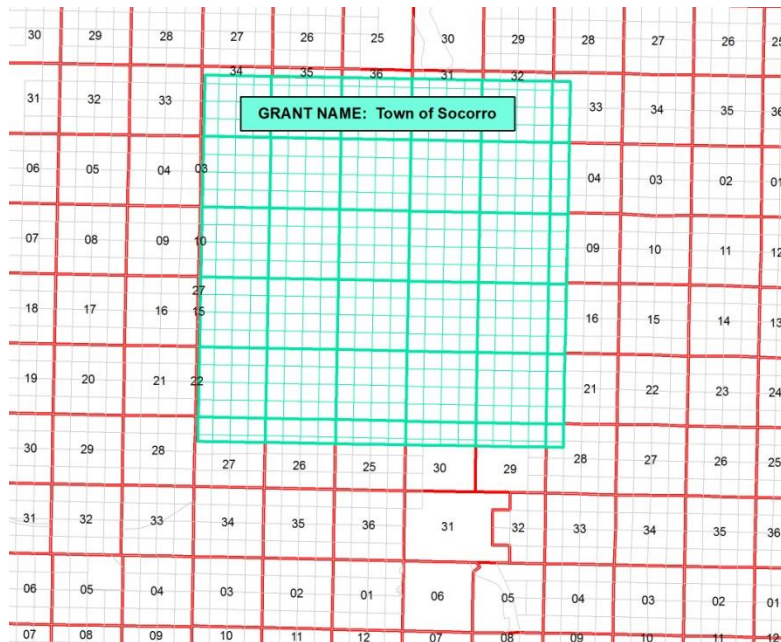


ROUTABLE NETWORK AVAILABLE: Request to EDAC/RGIS

GeoDATA: NM Land Index

New Mexico Lands Index: Standard Indexing System – Aligned with PLSS

- Funding: State Land Office/Dept. of Information Technology (SLO/DoIT)
- Content: PLSS-like Grid extension into Land Grants and No Data Areas
- Available: EDAC/RGIS Geospatial Data Clearinghouse (CadNSDI)
- Objectives
 - SLO requirement for State Lands accounting
 - DoIT requirement to support broadband provider data validation
 - Assist in “geocoding” legacy data based on extruded PLSS



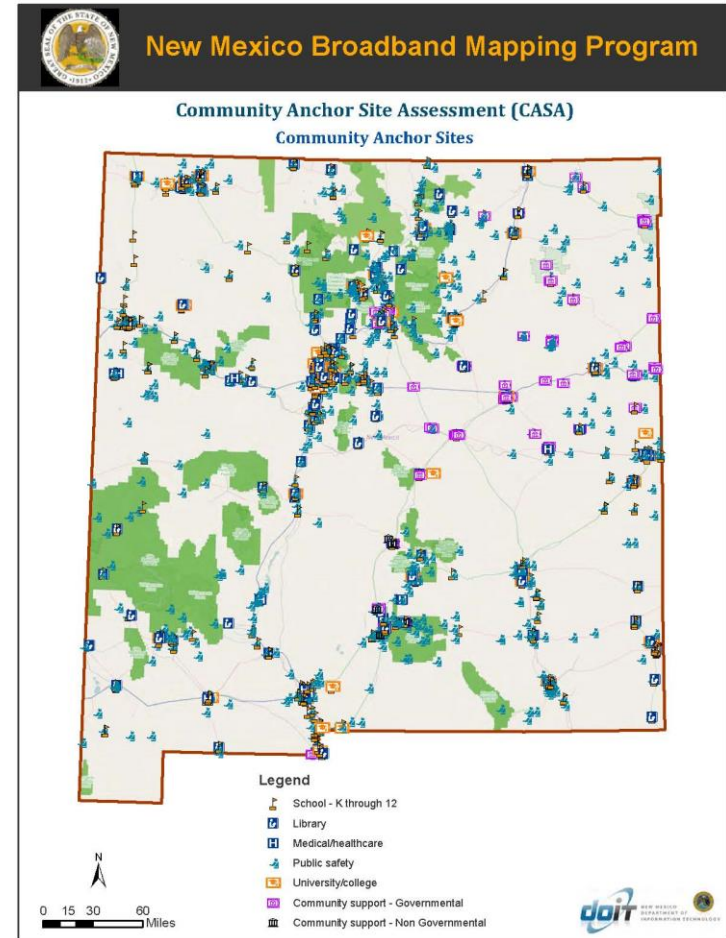
Application: UPC GeoLocator

- Create Parcel Centroid
- Statewide UPC Feature Class
- Emergency Response/Notification

GeoDATA: CASA

- Community Anchor Site Assessment (CASA)

- Integrated Database of Structures
 - Fire Stations (Fire Marshal)
 - Government Buildings (General Services/LCS)
 - Health Facilities (Dept. of Health)
 - Libraries (State Library)
 - Schools (Public Schools Facilities Authority)
 - Readiness Centers (National Guard)
 - Emergency Operations Center (US DHS/HSIP)
 - Miscellaneous (USGS/GNIS)
- Update Strategy – CrowdSourcing
- First for New Mexico
- Project: Government Facility Inventory
 - State/Local Collaborative (LCS/TRD)
 - Letters Requesting Assistance
 - Assessor Database Standards Opportunity

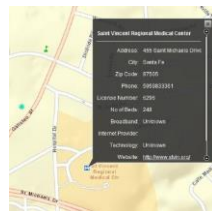




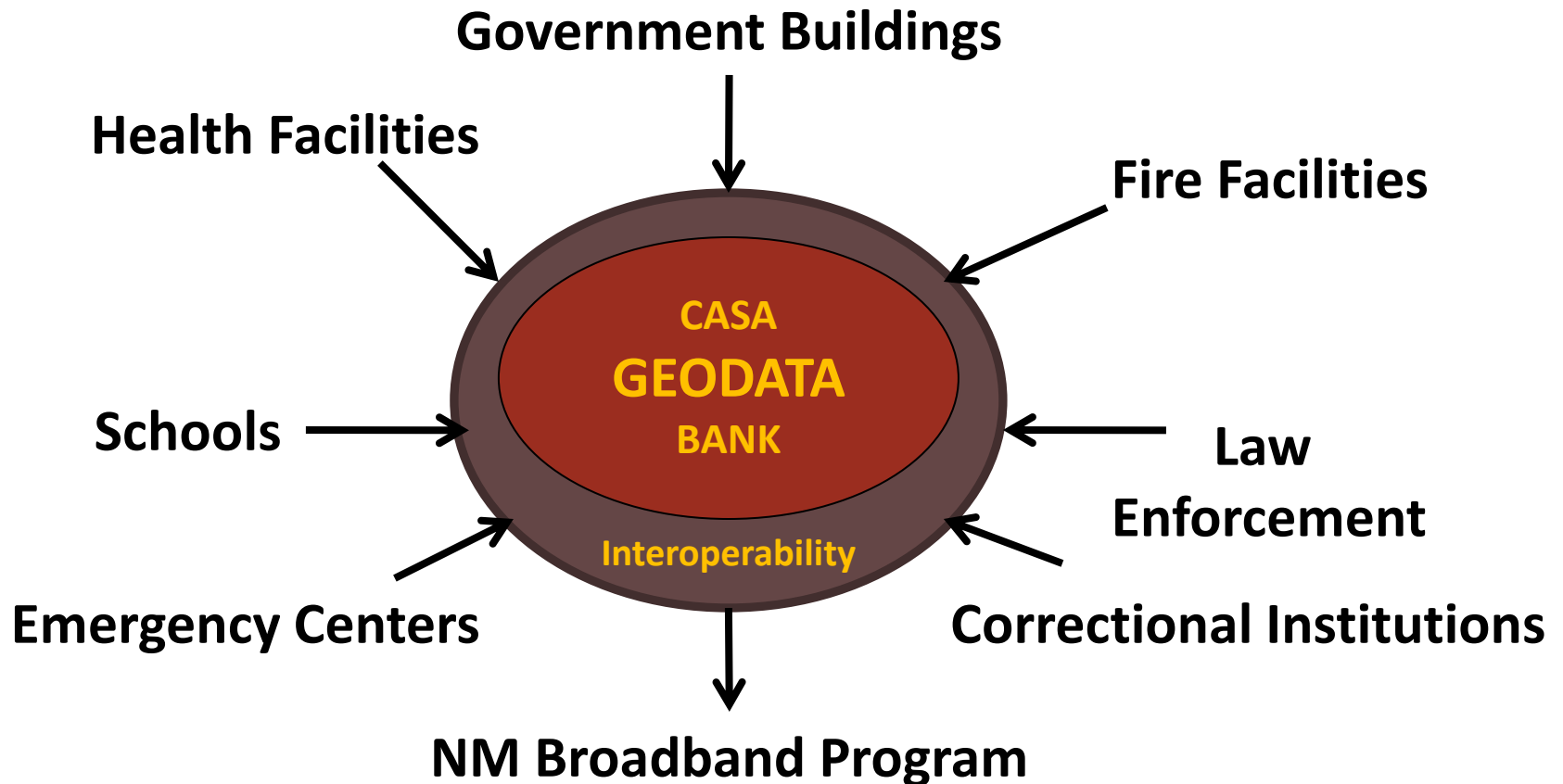
CASA: Data Classification

TOTAL: 4,252

- Medical/Healthcare (191)
 - Hospitals
 - Nursing Homes
 - Urgent Care
 - School-Based HC
 - Federally Qualified HC
 - Emergency Medical Services
- Public Safety (969)
 - EOC (73)
 - Fire Stations (645)
 - Law Enforcement (251)
 - Correctional Facilities
- Education (1,173)
 - Public Schools – K12 (1,033)
 - District Offices
 - Traditional
 - Alternative
 - State/District Charter
 - Grant/BIE Tribal
 - Higher Education (140)
- Government (1342)
 - State Government
 - Local Government
- Library (160)
 - Regional
 - Branch
 - Bookmobile Stop
- Non-Governmental (77)



CASA: Asset Management



CASA: NM911

OBJECTIVE/PROCESS:

- Assist First Responders in quickly locating public facilities
- Disaster planning and identify potential shelters
- Base requirement for Next Generation 911 Statewide implementation

RESOURCES:

- DoIT NM Broadband Program CASA Database
- DoIT NM 911 Address Database (Local Agencies)
- DoIT NM Public Safety Broadband Network Critical Infrastructure Data
- DPS NM Routable Road Network (Local Agencies)

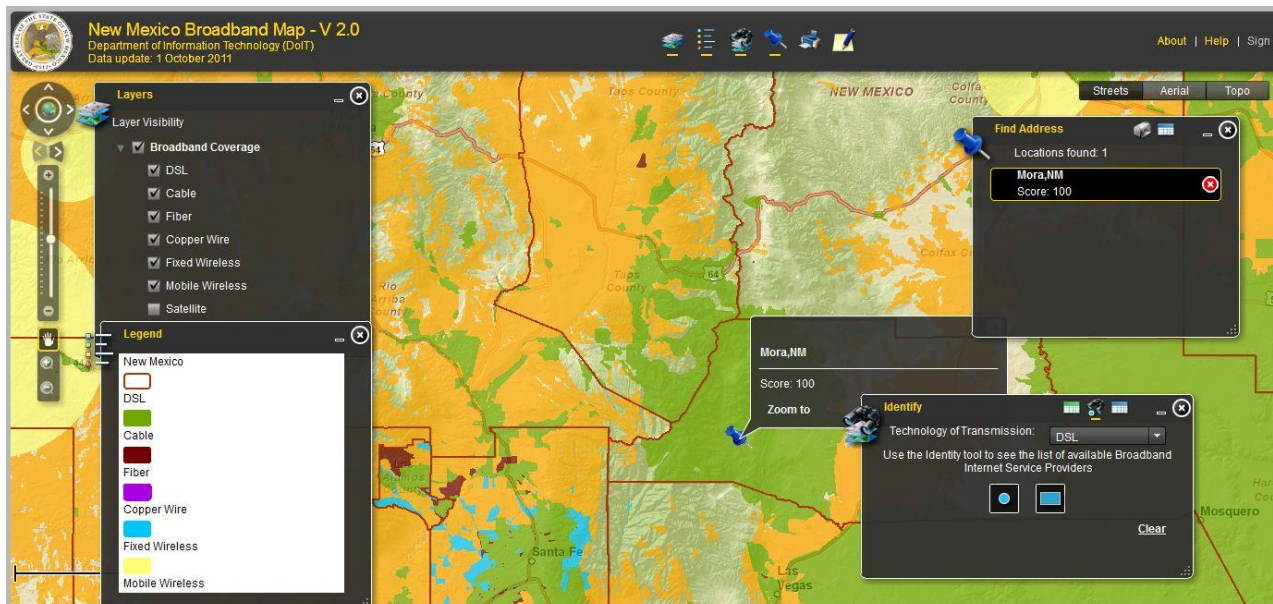
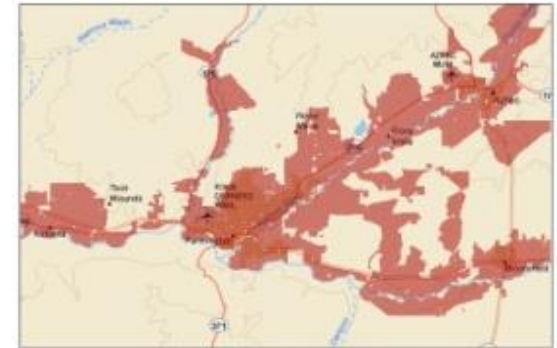
COLLABORATIVE

- Local Government Agencies
- Department of Information Technology
 - NM Broadband Program
 - NM 911 Program
 - NM Geospatial Advisory Committee
 - NM Public Safety Broadband Network
- Department of Finance Administration
- Department of Public Safety
- Department of Transportation

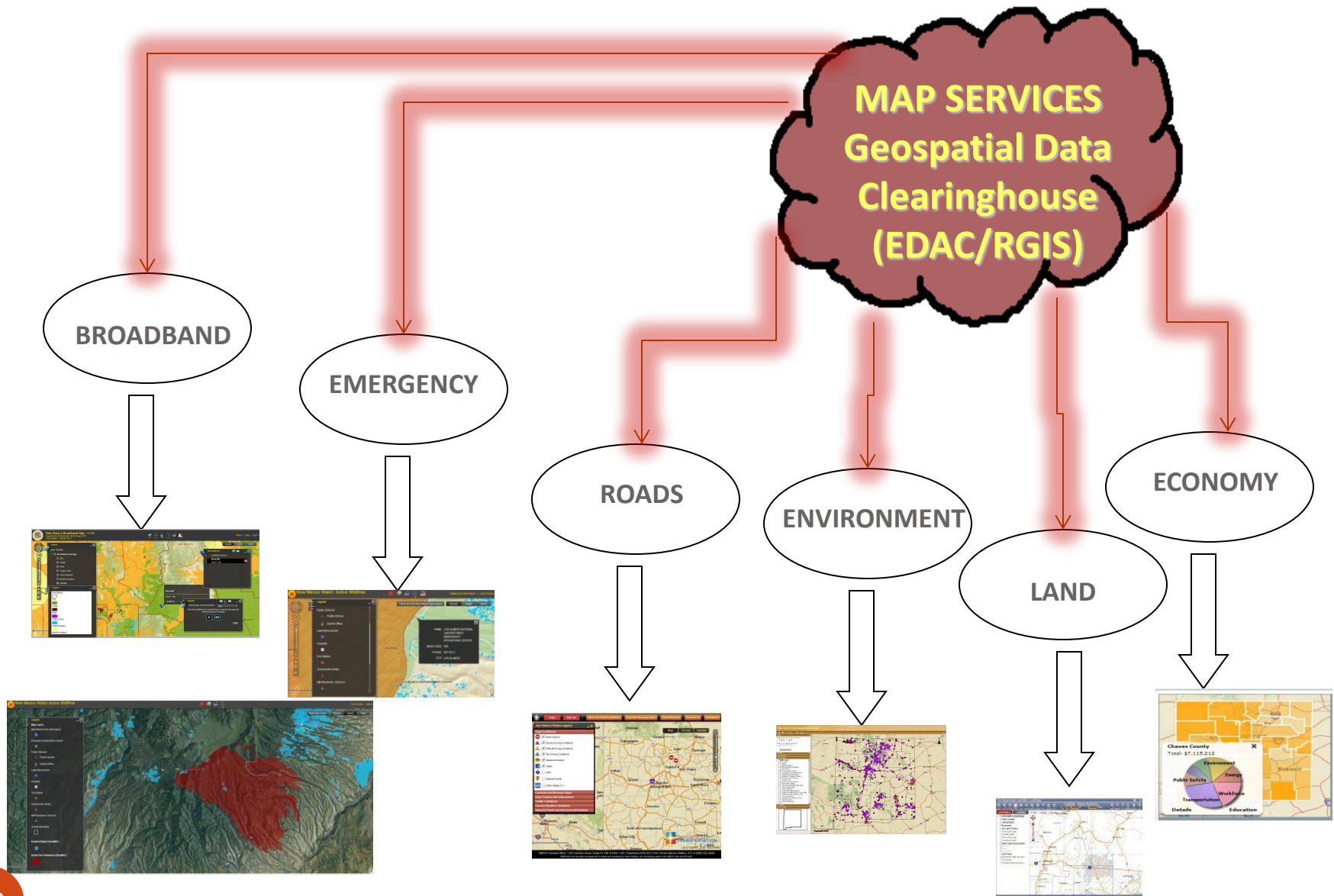


GeoSERVICES: Leveraging

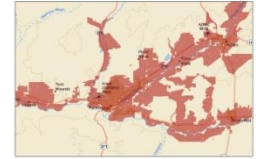
- New Mexico Broadband Map
 - Map Service
 - Initial Investment
 - Software/Hardware
 - Data
 - Development



GeoSERVICES: Online Map Services



GeoSERVICES: Broadband Map

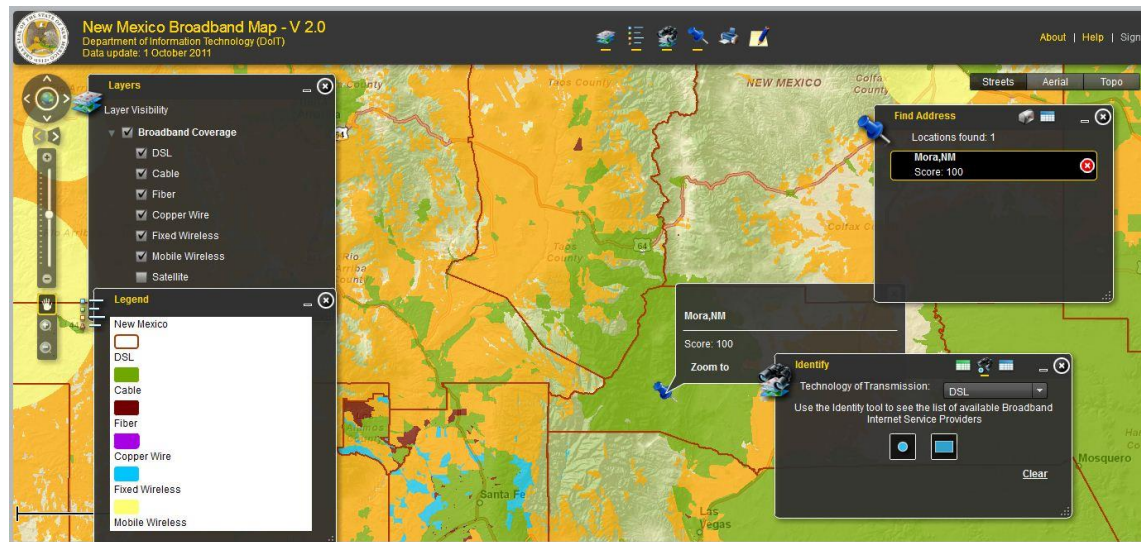
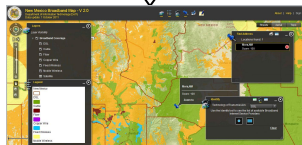


New Mexico Broadband Map (Availability)

- Source – Provider Data
- Type of Technology
- Search – Address, Community, Area, or Point

MAP SERVICES
Geospatial Data
Clearinghouse
(EDAC/RGIS)

BROADBAND



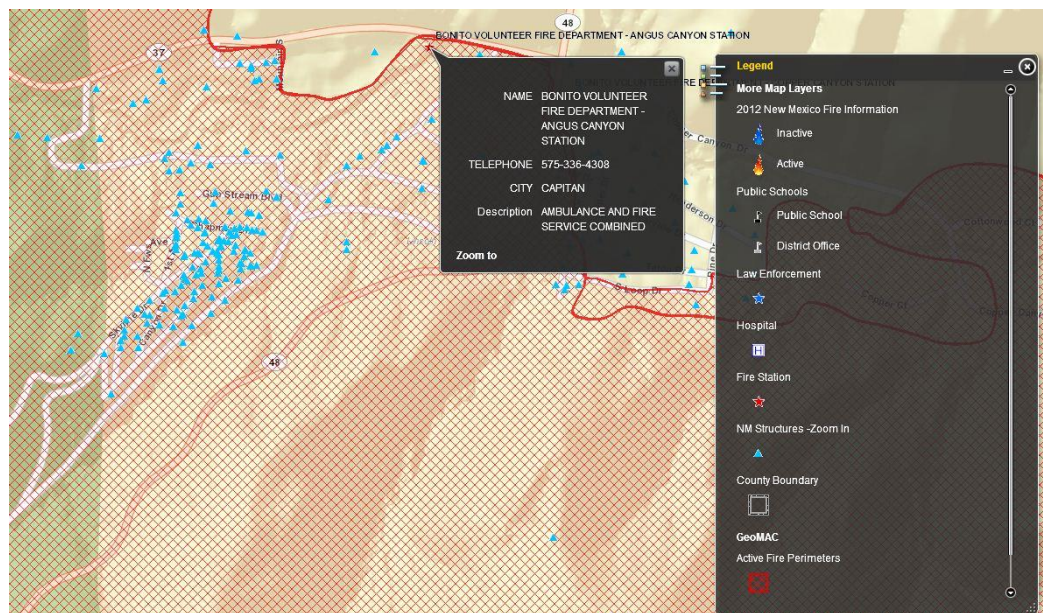
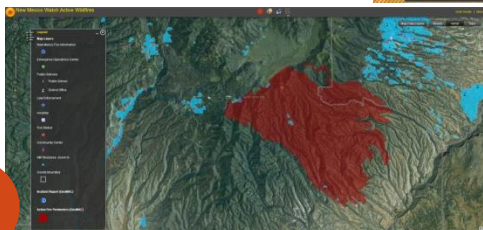
GeoSERVICES: Wildfire Watch



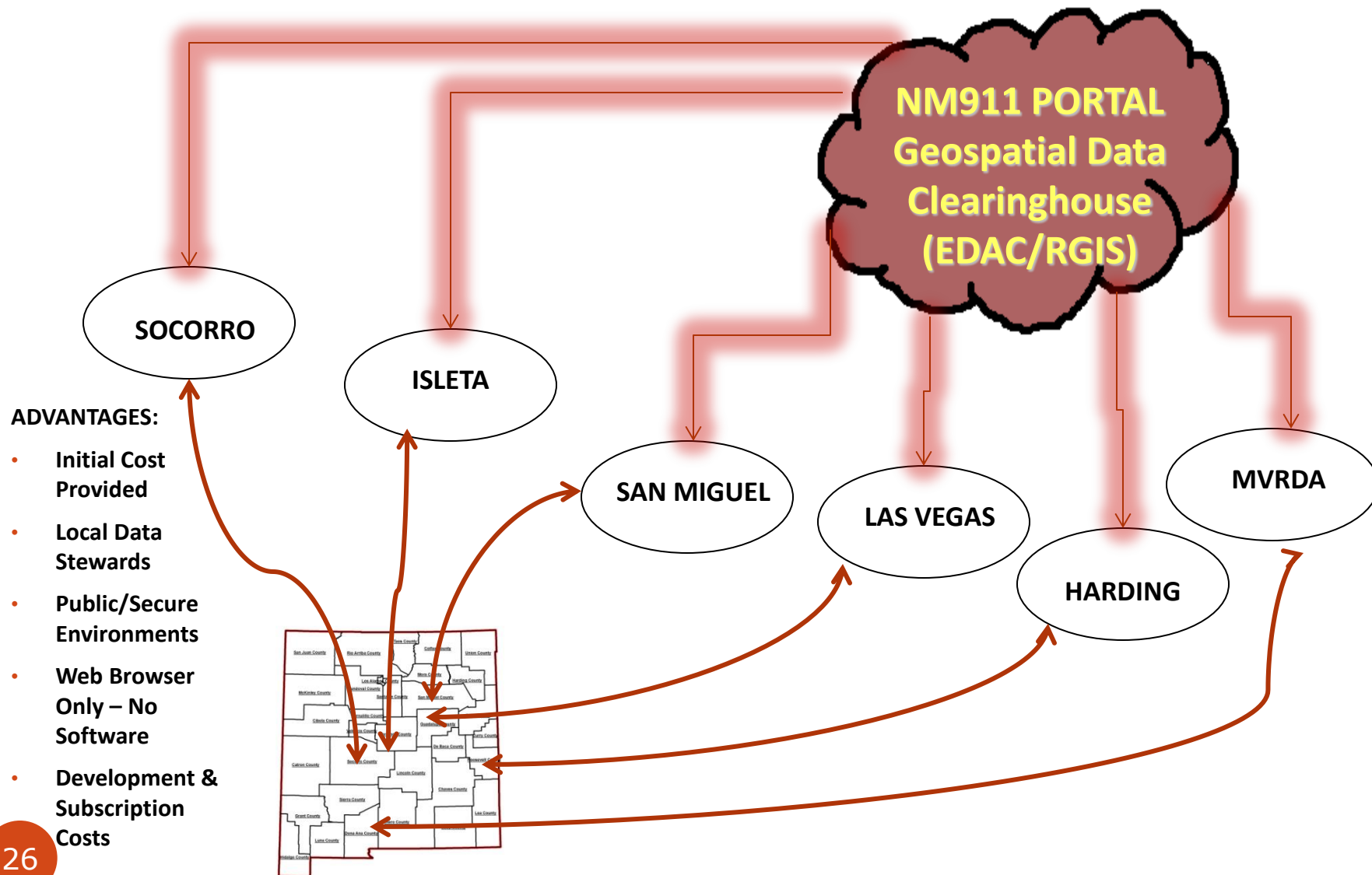
DATA SOURCES:

- County Structures
- Broadband CASA
- NM DOH Health Facilities
- NM Fire Marshal Stations
- NM National Guard Centers
- HSIP Facilities
- NHD/NRCS HUC
- GeoMAC Fire Data
- NWS Rain and Smoke
- BAER Team Soil Burn Severity
- USGS Stream Gages/Flow
- USGS Earthquake Hazards
- BLM Federal Lands

EMERGENCY



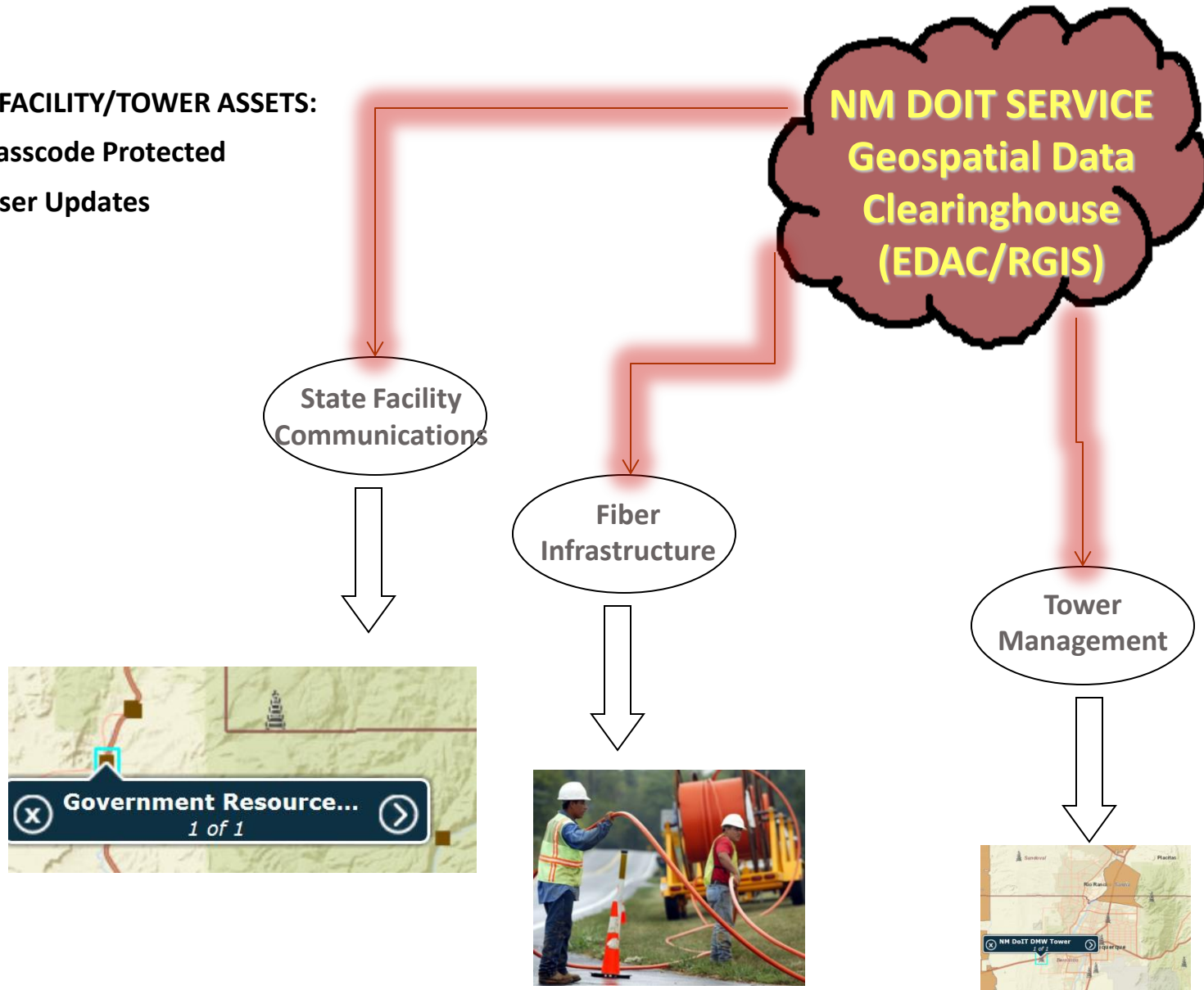
GeoSERVICES: NM911 Data Sources



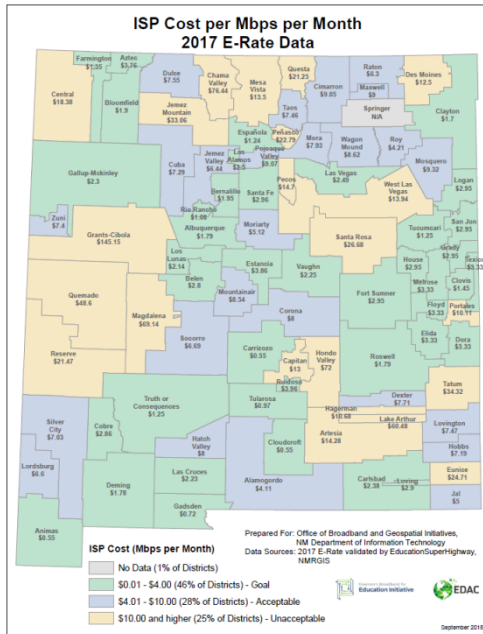
GeoSERVICES: DoIT Asset Tracking

DoIT FACILITY/TOWER ASSETS:

- Passcode Protected
- User Updates



GeoSERVICES: Education



BROADBAND FOR EDUCATION

- GeoAnalyses
- User Updates



Facilities within one mile radius to the school

Career Prep Alternative High School-Based Health Center |
Career Prep High School | Dine College - Shiprock South | Eva B.
Stokely Elementary | New Mexico Human Services Department -
Child Support Enforcement Division - County Office 9 | Nizhoni
Elementar

ISP·Contract·Expiration·by·School·District·
(Data·Transmission·and/or·Internet·Access·Only)

Data·Source:·USAC·2017·E·Rate·Data·&·E·Rate·data·validated·by·EducationSuperHighway

Alamogordo·Public·Schools—1211·Hawaii·Ave,·Alamogordo,·NM·88310

Internet·Service·Provider	Contract·Expiration·Date	
CenturyLink·Qwest·Communications·Company·LLC	6/30/2019	
TDS·Baja·Broadband·LLC	11/10/2019	
Tularosa·Communications,·Inc.	6/30/2019	

GeoCOMM: Synergistic Chatter



NEW MEXICO GEOGRAPHIC INFORMATION COUNCIL (NMGIC)

- **Function:** Geospatial Professionals Statewide and Beyond
- **Provides:** Digital Newsletter, Conferences, Workshops, Vendors, and Email Information
- **Fee:** \$30 Includes above and two box lunches
- **Join:** <http://nmgic.com/>



DOIT GEOSPATIAL ADVISORY COMMITTEE

- **Function:** Advises the State on Geospatial Issues (Standards, Data Acquisitions, etc.)
- **Membership:** State, Federal, Local, Industry, Public, and Professional Groups
- **Access:** No Restrictions and Meetings Open to All
- **Meetings:** Monthly on the Second Tuesday usually in Santa Fe
- **Provides:** Information Email Announcements (george.clarke@state.nm.us)
- **Website:** <http://www.gac.state.nm.us/>

NEW MEXICO 911 PROGRAM



VIDEOS:

- [Why 911](#)
- [The Dispatcher](#)
- [A 911 Call](#)

NM-911: Responsibilities

NM-911 Provides:

- **Oversight of the E-911 Fund**
- **Technical Assistance**
- **Compliance with Statute and Rule**
- **Guidelines for the E-911 Program**
- **GIS Technical Support and Data Review**

NM-911 Does Not Provide:

- **Regulatory Authority**
- **PSAP Operational Guidance**



PSAP: Responsibilities

- Annual Reporting
 - PSAP Profile and Annual Report
 - Annual Call Statistics
- Must be a 24 Hour, 365 Days Per Year Operation
- Must Have at Least One Dispatcher on Duty
- Must Record All Inbound 911 and Outbound Radio
- Must Have a Generator for Back Up Power
- 30 Minutes of Uninterruptible Power Supply (UPS)



PSAP (41)

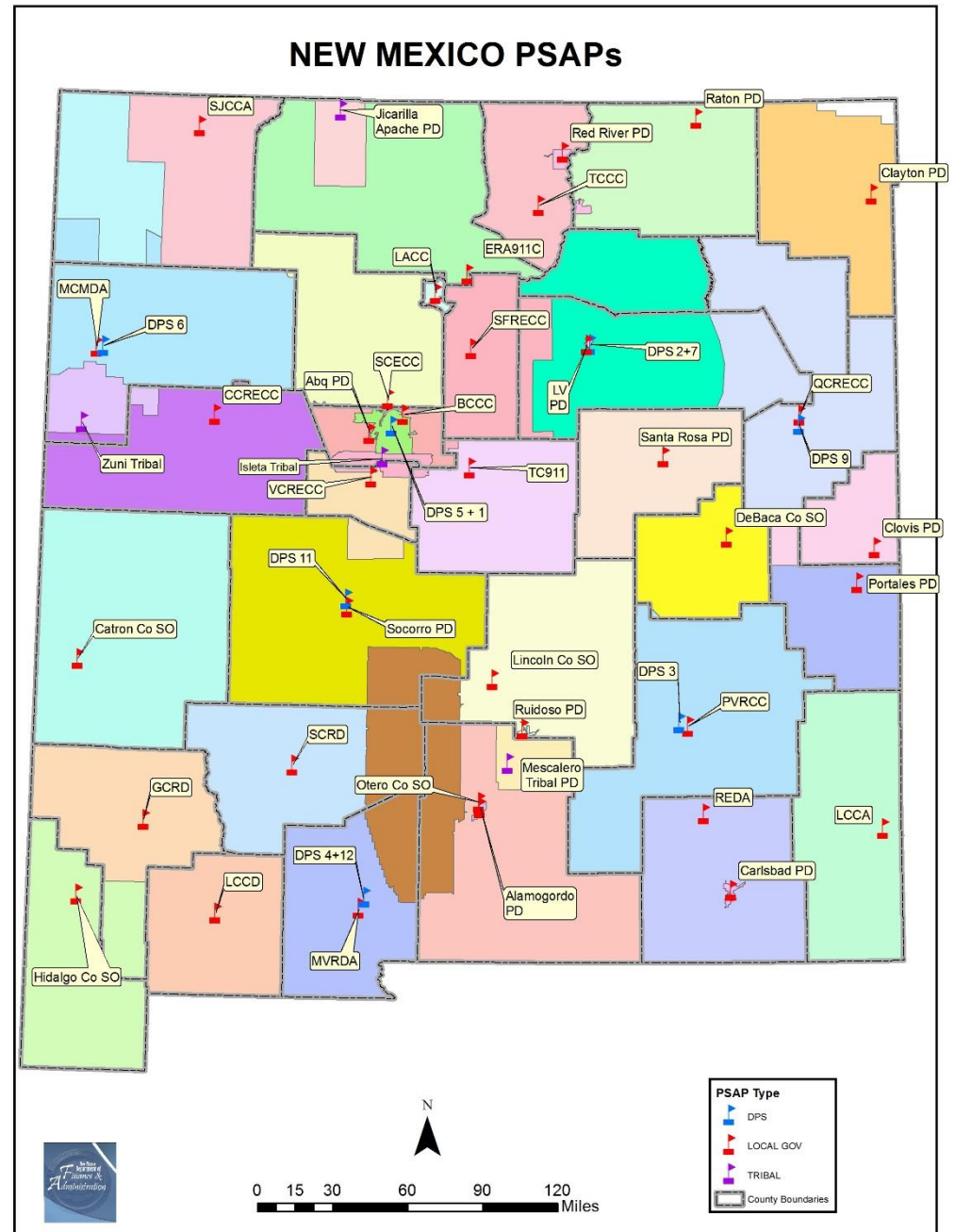
- Boundaries
- Locations

PSAP Calls

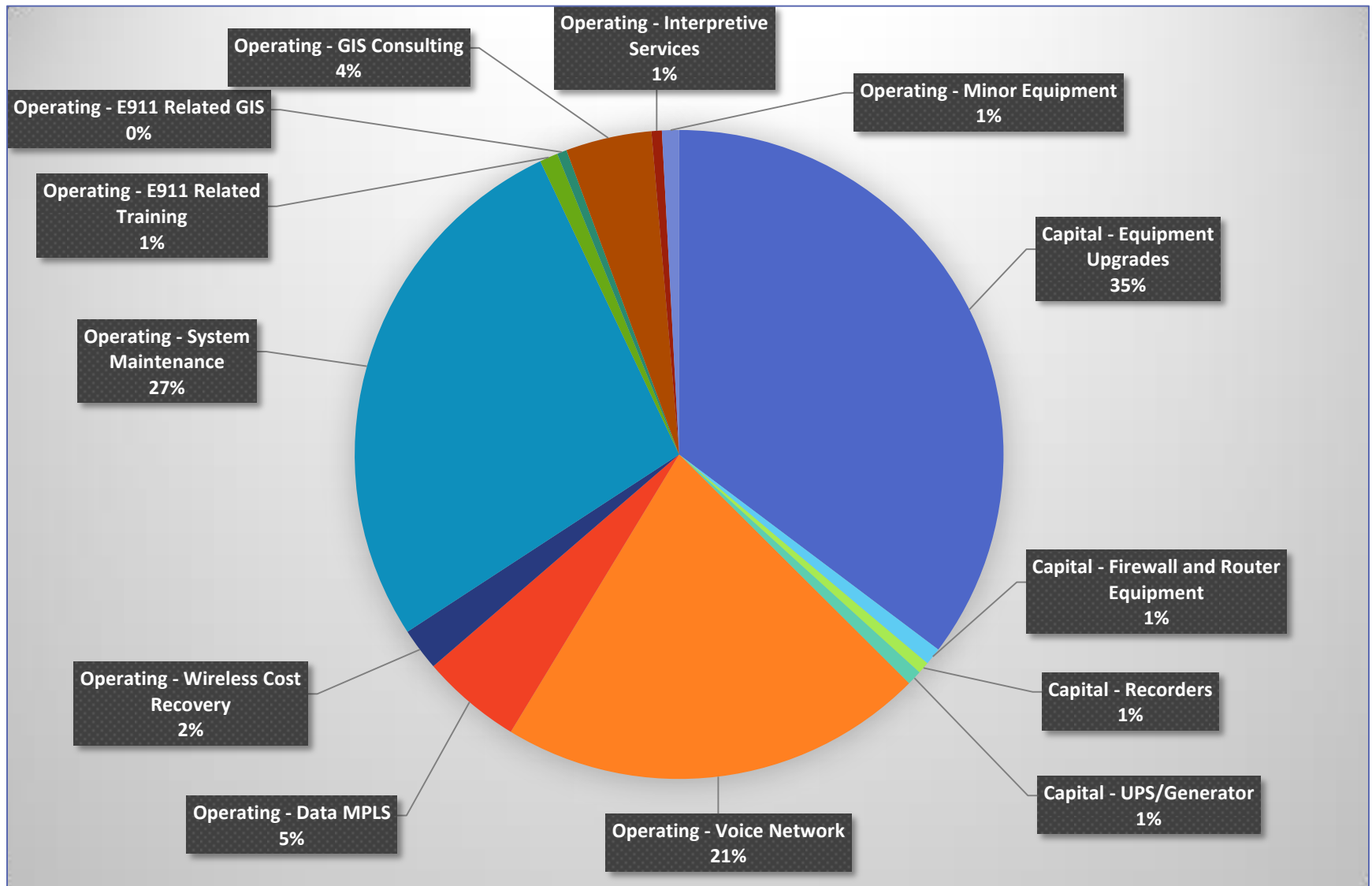
- Over 1,400,000 per year
- 2-3% increase per year
- Landline 17%
- Wireless 83%

Data Providers (70+)

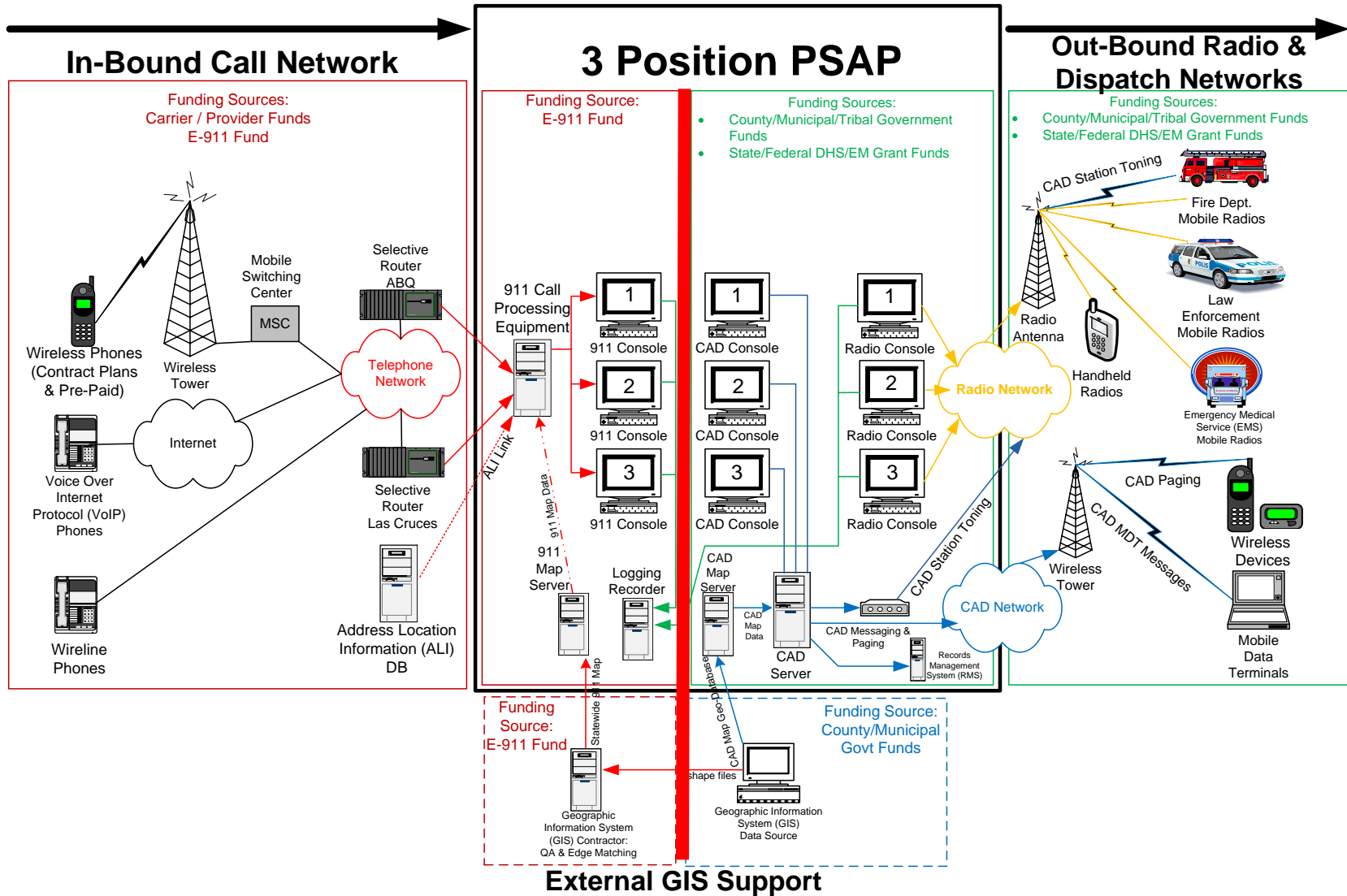
- Counties
- Incorporated Areas



Expenditures: FY16 by Category

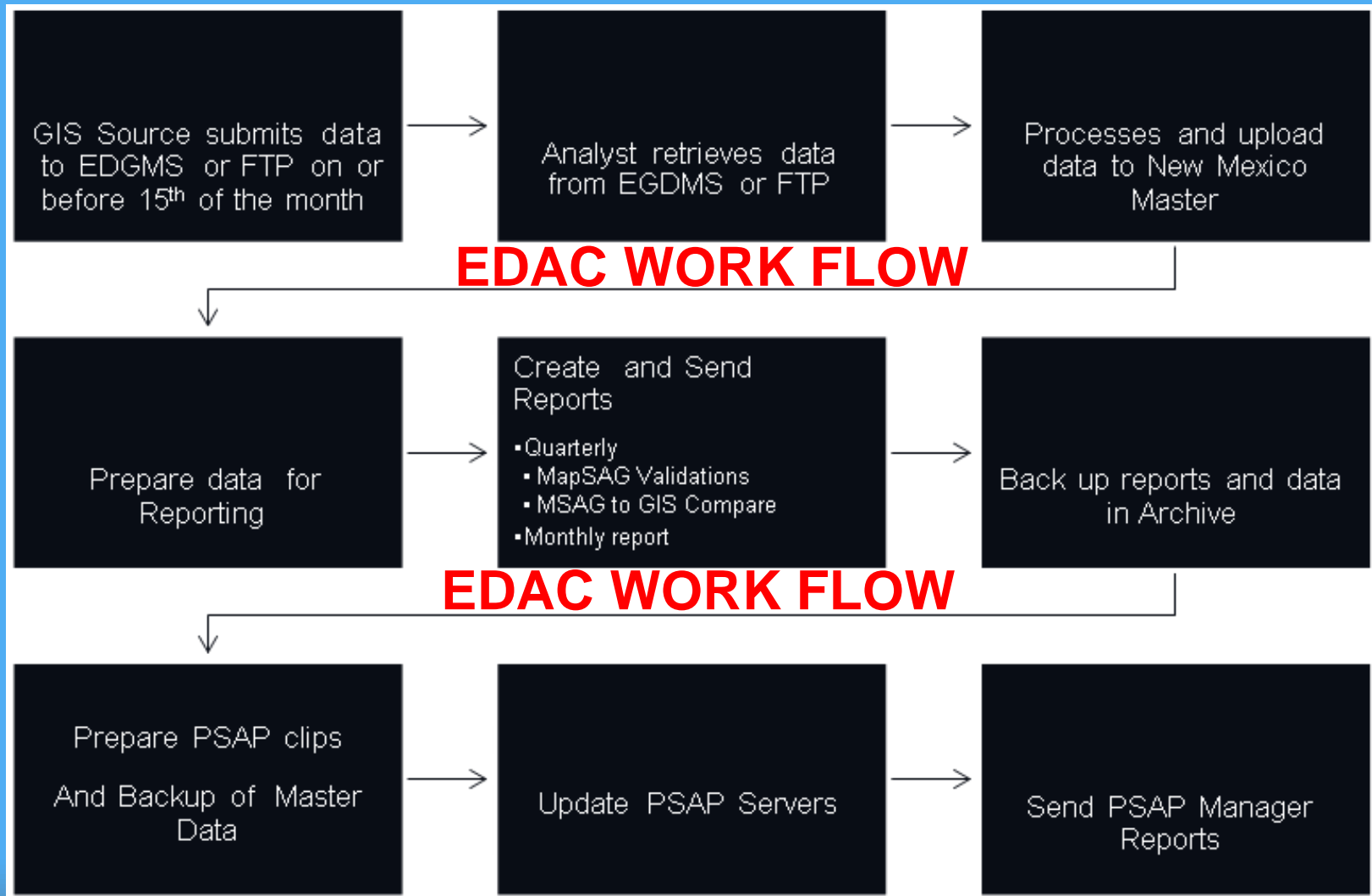


Public Safety Emergency Response End-to-End System



Data Acquisition – Processing – Statewide Merge – PSAP Clip – Map Servers
EDAC EDAC EDAC BHI BHI

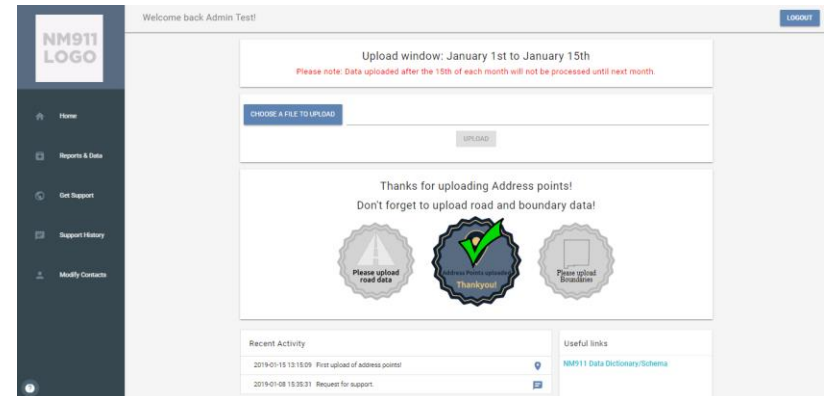
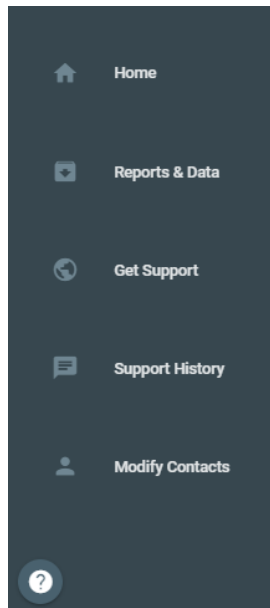
GIS: Workflow - Acquire/Upload



WORKFLOW: Data Services (EDAC)

GeoData Processing

- Acquire data from GeoProviders
 - Roads/addresses/boundaries/etc.
- Run error checking and report
- Transform to Statewide Standard
- Upload for PSAP Processing



GeoServices

- Portal development
- Technical support
- Training apps and webinars

WORKFLOW: Map Server Download (BHI)

Map Server Upload

- Obtain statewide layers
 - Roads/addresses/boundaries/etc.
- Transform to PSAP formats
- Clip to PSAP boundaries
- Upload data to PSAPs
- Verify/document upload status
- Deliver monthly reports
 - Reports to DoIT and PSAPs

NM911 Monthly GIS Data Workflow

